

Z1198-ST LARGE CAPACITY OIL INTERCEPTOR WITH INTEGRAL STORAGE TANK AND OIL LEVEL FLOAT SENSOR



ENGINEERING SPECIFICATION

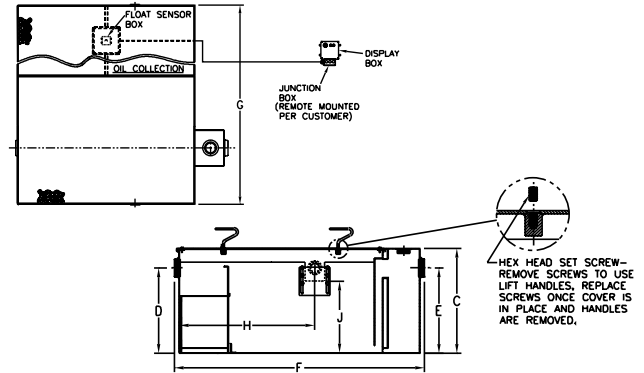
Zurn Z1198-ST oil interceptor features acid resistant coated interior and fabricated steel exterior, fiberglass sensor box containing an electronic oil level sensor, fiberglass display box with audio and visual alarms and junction box. Includes bronze cleanout plug and visible double wall trap seal, removable combination pressure equalizing/flow-diffusing baffle and sediment bucket, adjustable oil draw-off, and vent connections. Secured, gasketed, non-skid cover comes complete with flow control fitting and left hand integral storage tank. Regularly furnished with inlet and outlet in high position.

NOTES

Location of inlet and outlet from bottom of interceptor cannot be changed.

CAUTION

Interceptors must be maintained periodically in order to ensure proper operation of the system. Follow cleaning schedule based on usage.



SUFFIXES	DESCRIPTION	SIZE	ADD
-HD	Heavy-Duty Traffic Cover rated at 10,000 lbs. maximum safe live load. An increased 'C' dim. is required when -HD option is specified.	75	13,106.00
		100	18,070.00
		125	19,808.00
		150	23,191.00
		200	26,454.00
		250	36,480.00
		300	46,854.00
		350	55,263.00
		400	63,621.00
		450	72,717.00
500	77,763.00		
-K	Anchor flange 1 3/4" down from top and 2" wide. A 3" minimum extension height is required when anchor flange (-K) option is specified. (Specify 'C' Dim. height required.)	75	2,827.00
		100	3,166.00
		125	3,760.00
		150	4,389.00
		200	4,685.00
		250	6,288.00
		300	7,100.00
		350	7,911.00
		400	8,399.00
		450	8,891.00
500	9,418.00		
-KC	Anchor flange 1 3/4" down from top and 2" wide with clamp collar. A 3" minimum extension height is required when anchor flange (-KC) option is specified. (Specify 'C' Dim. height required.)	75	5,108.00
		100	5,698.00
		125	6,387.00
		150	7,059.00
		200	8,246.00
		250	10,676.00
		300	12,021.00
		350	13,287.00
		400	14,022.00
		450	14,986.00
500	15,817.00		
-STR	Storage tank on right-hand side when facing the inlet.		N/C
BEST SELLER			LIST PRICE
Z1198-ST-75-31P			54,629.00

PREFIXES	DESCRIPTION	SIZE	LIST PRICE
Z1198-ST*	Acid Resistant Coated Fabricated Steel	75	54,629.00
		100	58,264.00
		125	65,945.00
		150	69,304.00
		200	93,043.00
		250	105,919.00
		300	118,377.00
		350	POA
		400	POA
		450	POA
500	POA		

SUFFIXES	DESCRIPTION	ADD	EA. ADDITIONAL	
			SIZE	UP TO 10"
-E	Integral Acid Resistant Coated interior and exterior fabricated steel extension section. (Specify 'C' Dim. required for recessed installation.)	75	399.00	5,878.00
		100	418.00	6,130.00
		125	453.00	6,387.00
		150	476.00	6,631.00
		200	493.00	9,492.00
		250	552.00	12,317.00
		300	633.00	14,989.00
		350	699.00	17,738.00
		400	756.00	20,699.00
		450	795.00	24,140.00
500	831.00	27,638.00		

Flow Rate gpm [LPM]	Inlet/Outlet inch [mm]	Water Capacity gallon [L]	Oil Capacity gallon [L]	Approximate Weight lb [kg]	No. of Covers		Dimensions in inches [mm]					
					Trap	Tank	C	D/E	F	G	H	J
75 [284]	3 [76]	88 [333]	125 [473]	615 [279]	1	1	22-3/4 [578]	18-1/2 [470]	51-3/8 [1305]	65-3/8 [1661]	29-1/4 [743]	15-1/2 [394]
100 [379]		159 [602]		800 [363]			27 [686]	23 [584]	60-3/8 [1534]	82-3/8 [2092]	35-1/4 [895]	19-3/4 [502]
125 [473]		208 [787]	250 [946]	1450 [658]			30-1/8 [765]	24-1/2 [622]	64-1/4 [1632]	84-5/8 [2149]	36 [914]	21 [533]
150 [568]	4 [102]	235 [890]		1640 [744]	2	2	30-3/4 [781]	25-1/4 [641]	68-1/4 [1734]	82-3/4 [2102]	38-11/16 [983]	21-5/8 [549]
200 [757]		333 [1261]		1950 [885]			35-1/2 [902]	29-7/8 [759]	71-3/8 [1813]	92-3/4 [2356]	43-1/2 [1105]	26-3/8 [670]
250 [946]		445 [1685]	400 [1514]	2650 [1202]			41 [1041]	36 [914]	75-1/2 [1918]	95-5/8 [2429]	40-3/4 [1035]	32-1/2 [826]
300 [1136]		664 [2514]		3400 [1542]			46-1/4 [1175]	39-5/8 [1006]	82-3/8 [2092]	92-3/8 [2346]	48-1/16 [1221]	37-3/4 [959]
350 [1325]	6 [152]	1006 [3808]		4000 [1814]	2	2	50-1/2 [1283]	43-7/8 [1114]	103-1/8 [2619]	104-3/4 [2661]	61-15/16 [1573]	40-3/8 [1026]
400 [1514]		1266 [3808]	700 [2650]	4700 [2132]			54-1/4 [1378]	47-5/8 [1210]	110-1/8 [2797]	102-5/8 [2607]	66-9/16 [1691]	44-1/8 [1121]
450 [1703]		1575 [5962]		5200 [2359]			55-1/4 [1403]	48-5/8 [1235]	123-1/8 [3127]	102-7/8 [2613]	75-1/4 [1911]	44-5/8 [1133]
500 [1893]		1695 [6416]		5500 [2495]			57-1/4 [1454]	51-5/8 [1311]	124-1/8 [3153]	103-5/8 [2632]	73-15/16 [1878]	48-1/8 [1222]

*Regularly furnished unless otherwise specified.

For additional product information, please visit www.zurn.com

Items designated as Best Sellers are most specified and are generally in stock for shipment.

INTRO
ROOF DRAINS
FLOOR DRAINS
T, P, BW VALVES
INTERCEPTORS
CARRIERS
HYDRANTS
CLEANOUTS
WHA
SS DRAINS
FAB SS DRAINS
SAN-FLOOR
TECH INFO